

# Breakbulk & Project Cargo

## Journal of Commerce

### Breakbulk & Project Cargo

#### Index

Journal of Commerce  
by **S&P Global**

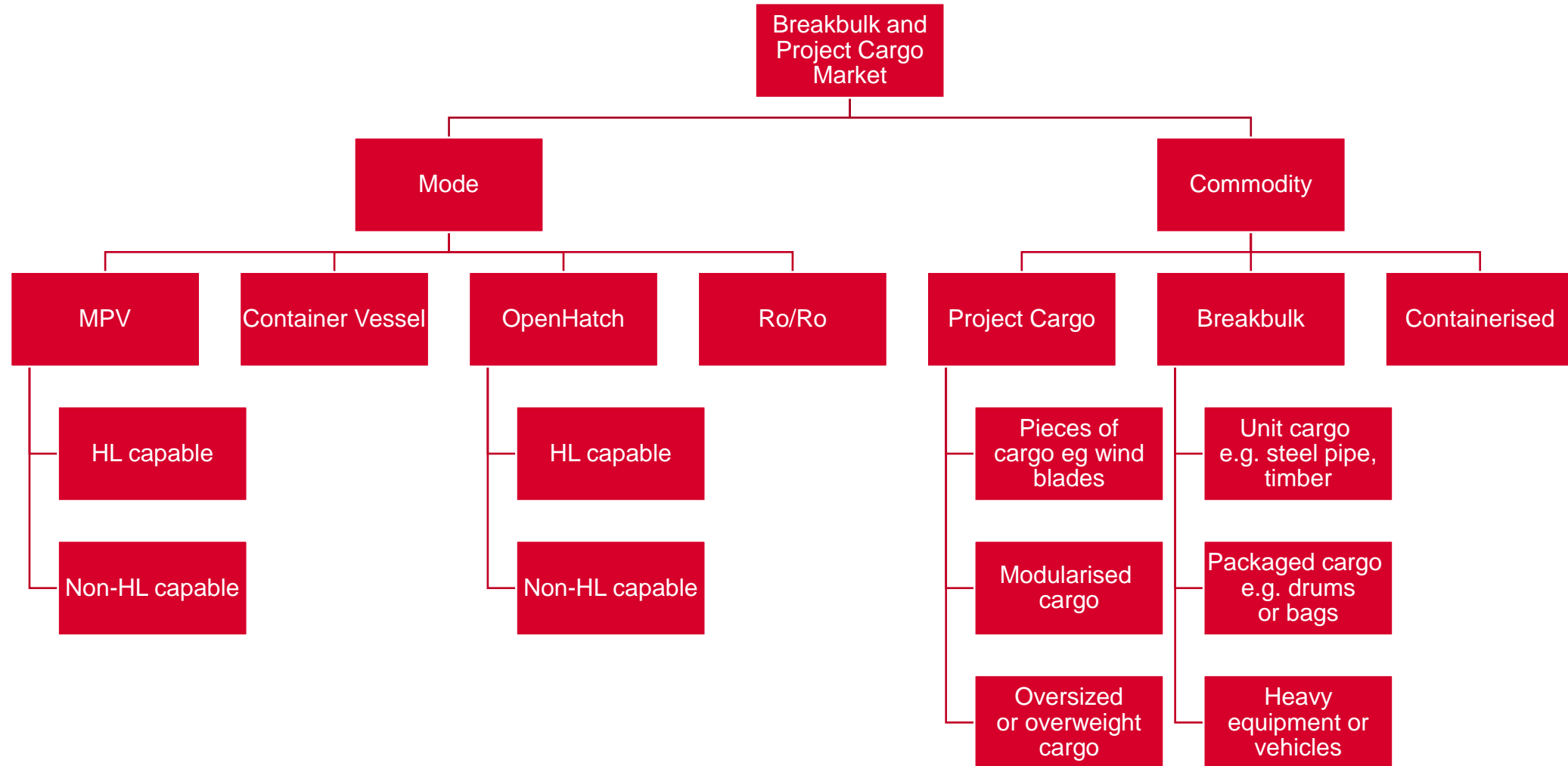
Susan Oatway FICS  
Senior Research Analyst  
Journal of commerce / S&P  
Global

24<sup>th</sup> April 2025



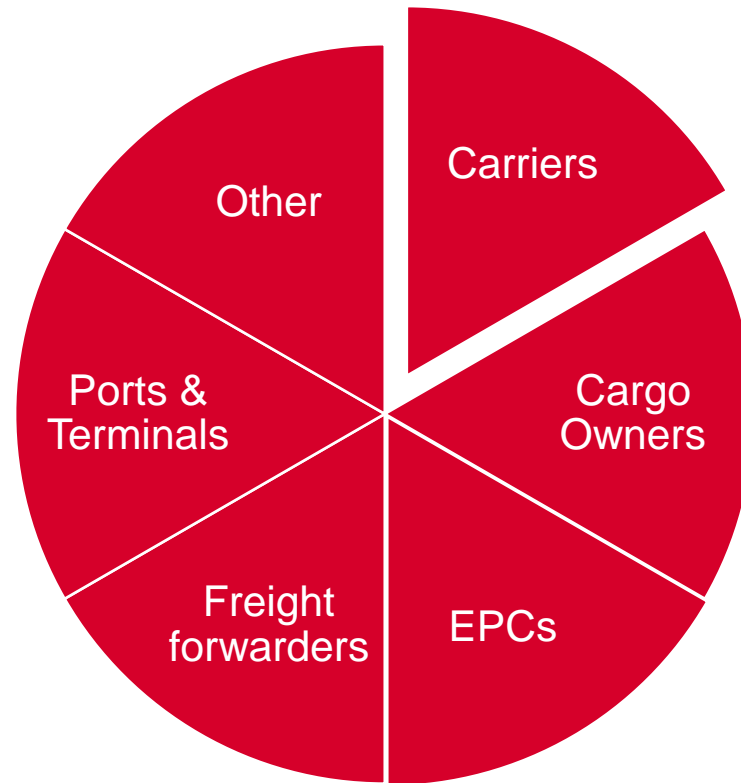
# Breakbulk & Project Cargo

An index for a fragmented market



# Breakbulk & Project Cargo

With multiple players



# Breakbulk & Project Cargo

## Monthly survey to cargo owners

- Are you moving more or less volume for X vessel type?
- Are you booking more or less than 3 months out for X vessel type?
- Where is most of your cargo coming from? Going to?
- Has your routeing changed? How?

Recently added:

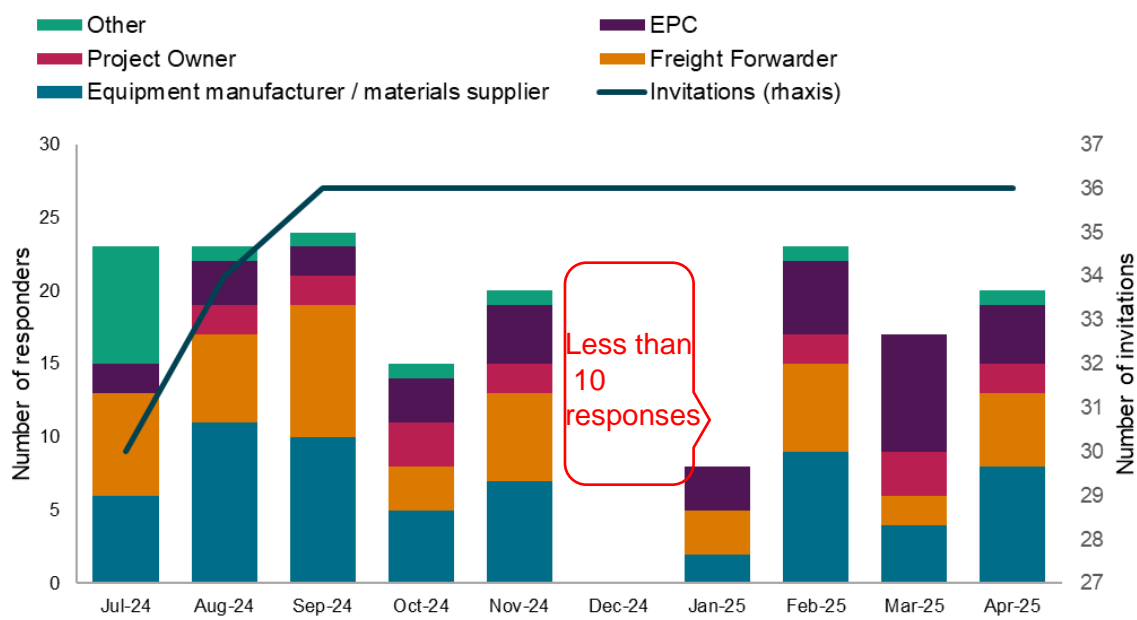
- What percentage of your chartered fleet is Chinese built?



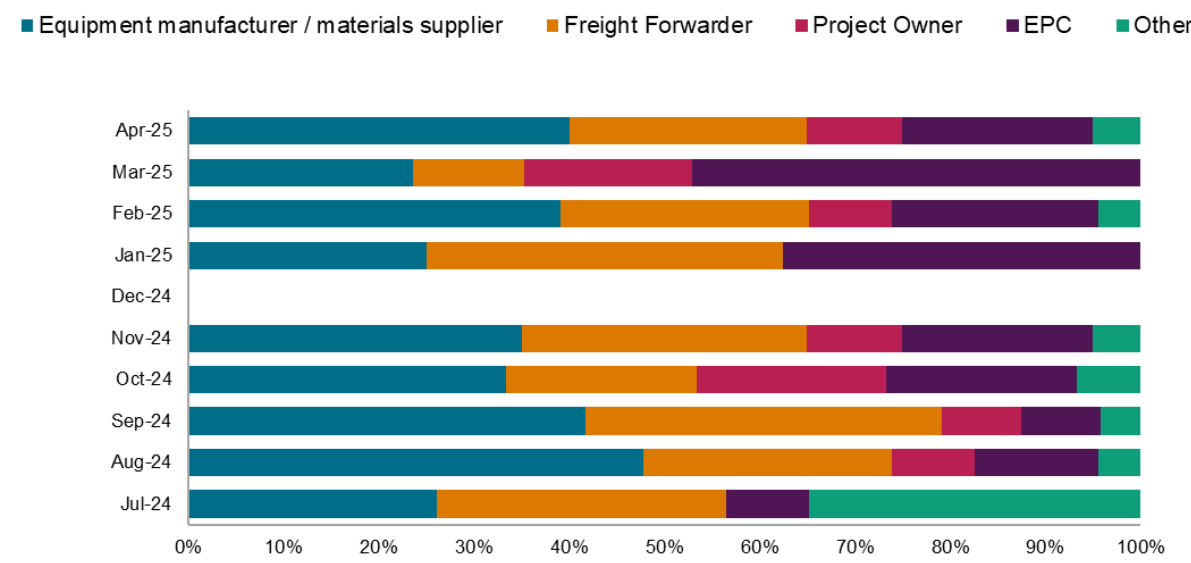
# Breakbulk & Project Cargo

## Shippers' Index: Responders

Shipper type by number of responders by survey month



Shipper type, percentage of responders



Source: S&P Global Market Intelligence

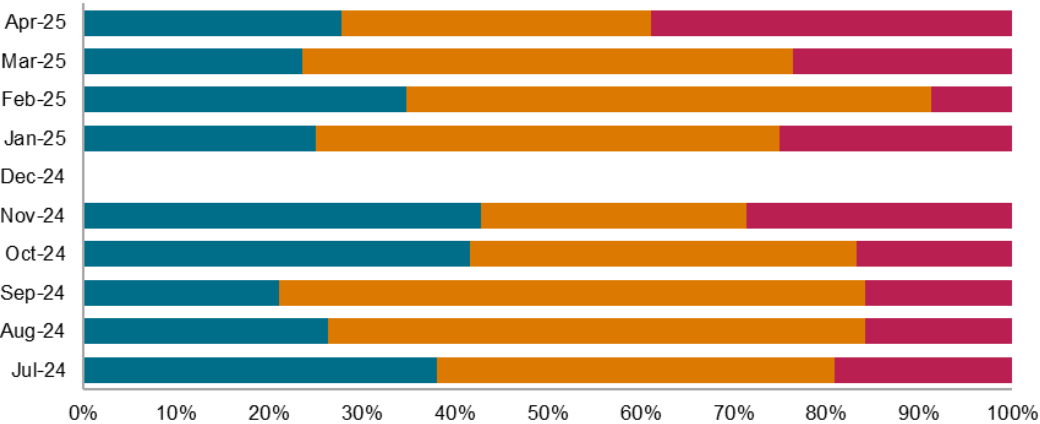


# Breakbulk & Project Cargo

## Shippers' Index: Ocean Transport

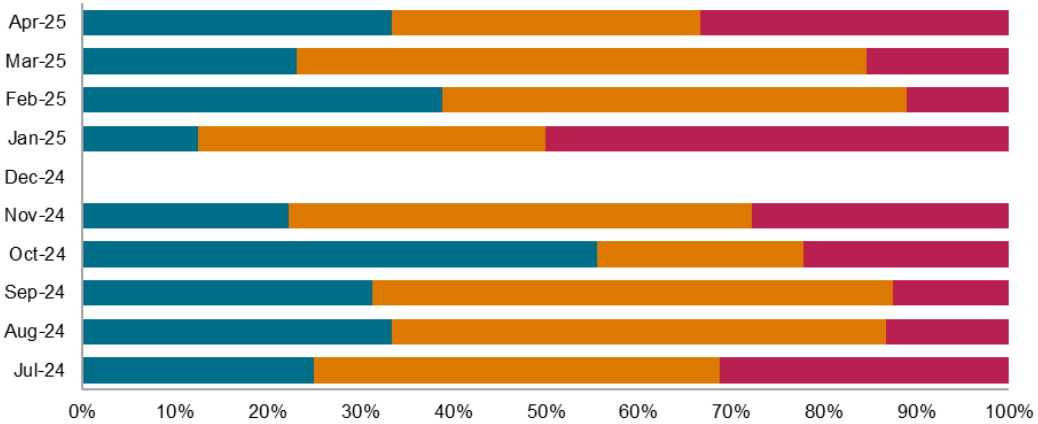
Are you moving more or less volume on general cargo / multipurpose vessels (lift capability less than 250t)?

■ more compared to last month   ■ About the same compared to last month   ■ less than last month



Are you moving more or less volume on heavy-lift (able to load more than 250t in a single lift) capable vessels?

■ more compared to last month   ■ About the same compared to last month   ■ less than last month

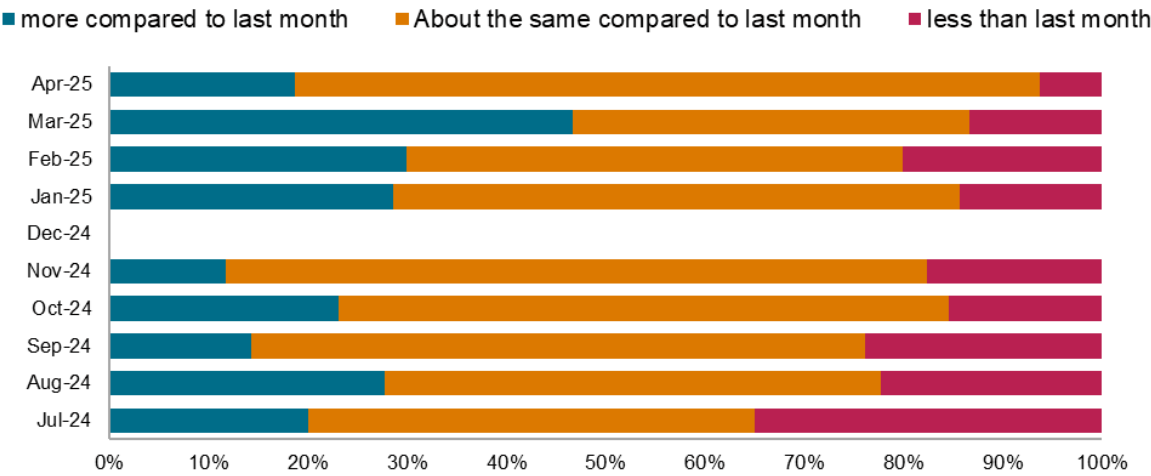


Source: S&P Global Market Intelligence

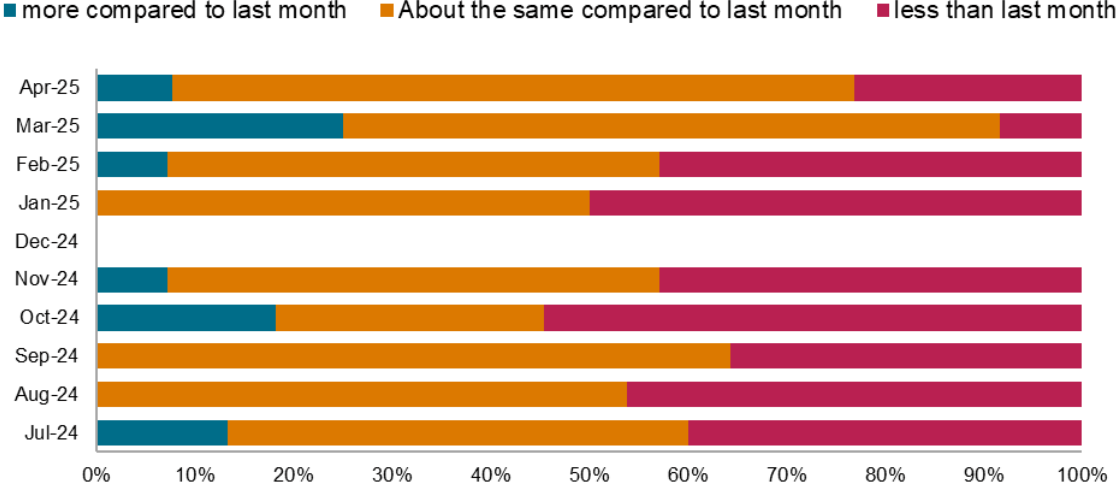
# Breakbulk & Project Cargo

## Shippers' Index: Ocean Transport

Are you moving more or less volume on container carriers?



Are you moving more or less volume on ro/ro vessels?

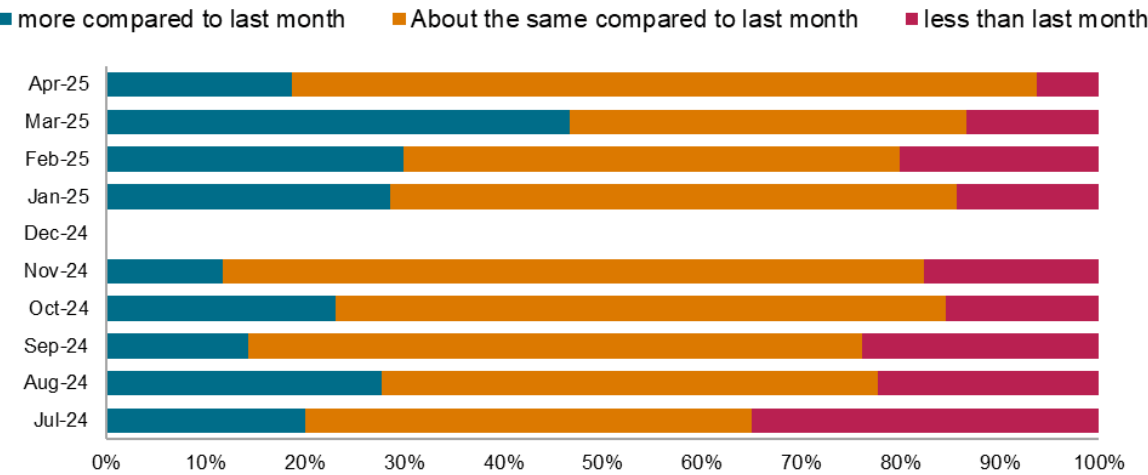


Source: S&P Global Market Intelligence

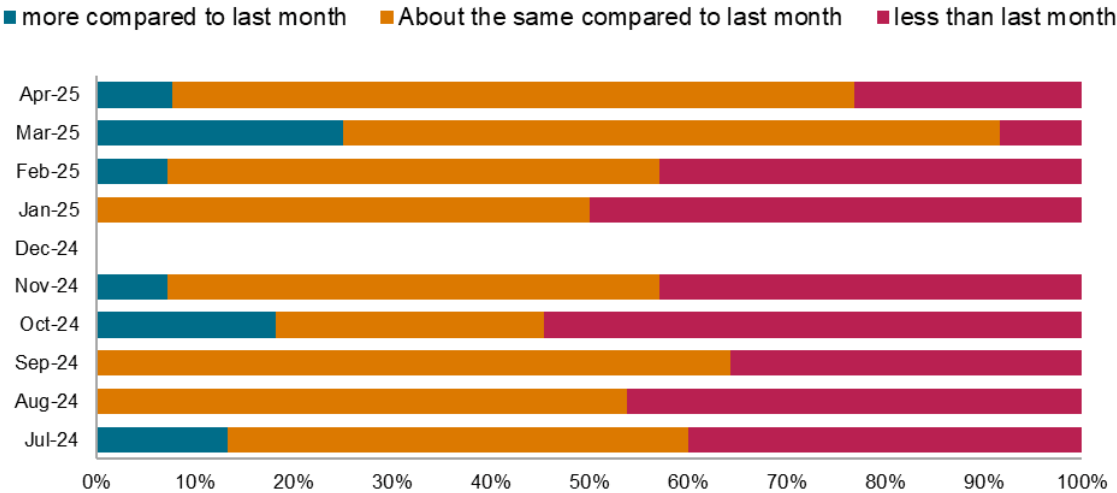
# Breakbulk & Project Cargo

## Shippers' Index: Ocean Transport

Are you moving more or less volume on container carriers?



Are you moving more or less volume on ro/ro vessels?



Source: S&P Global Market Intelligence

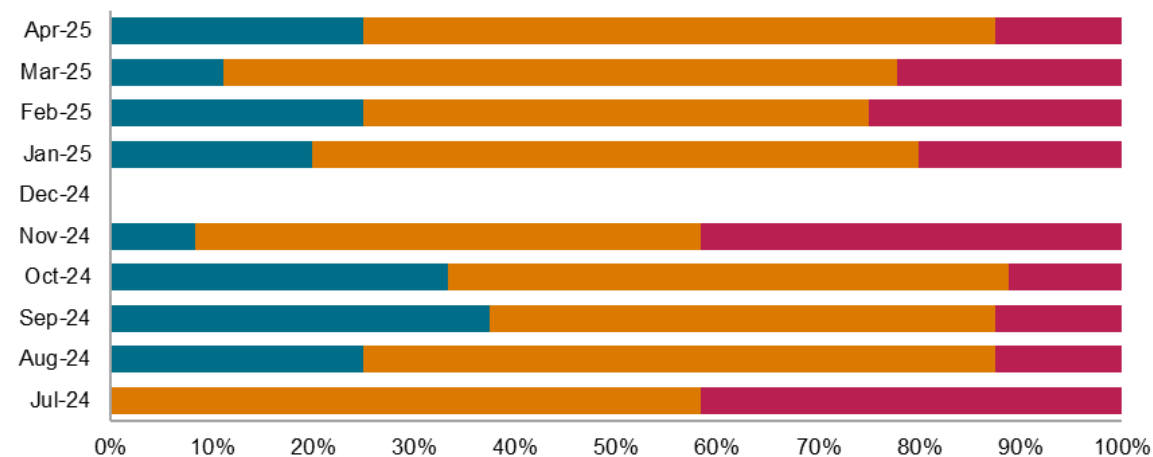


# Breakbulk & Project Cargo

## Shippers' Index: Ocean Transport

Are you moving more or less volume on deck carriers?

■ more compared to last month   ■ About the same compared to last month   ■ less than last month



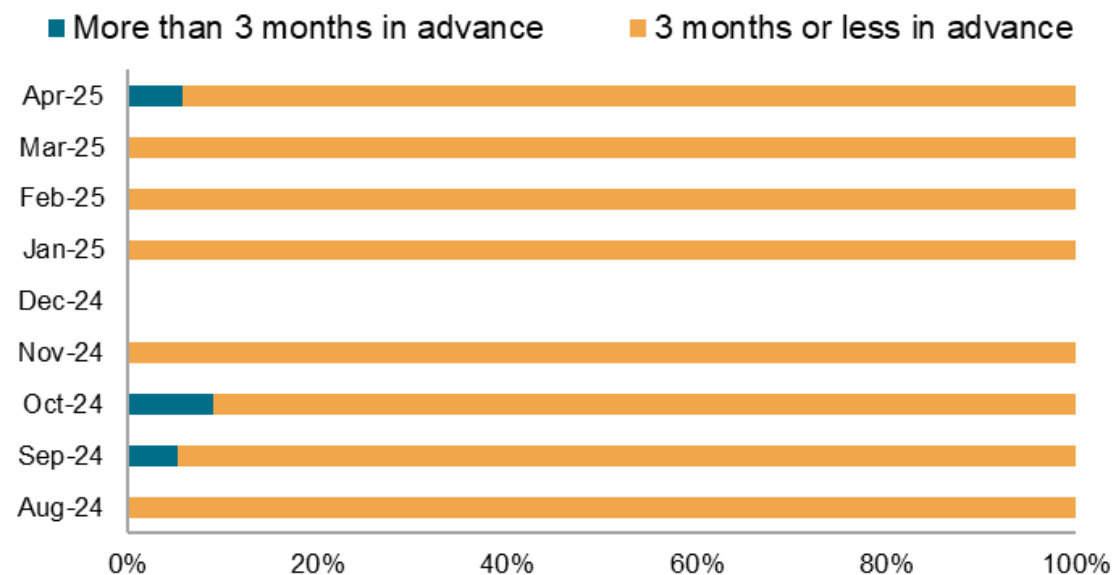
Source: S&P Global Market Intelligence



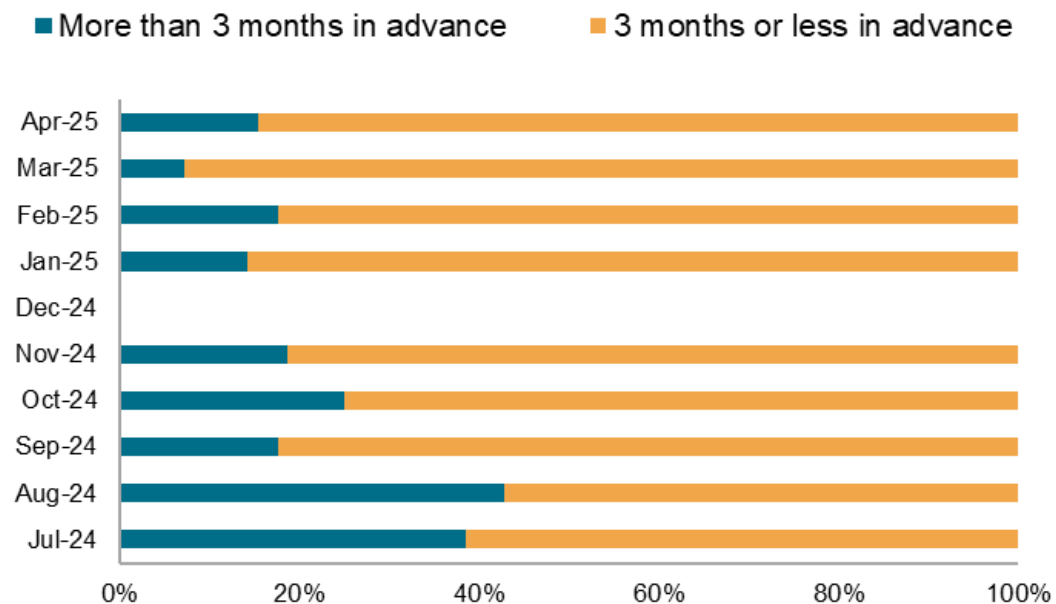
# Breakbulk & Project Cargo

## Shippers' Index: Lead time needed to book vessels

Lead time MPV / general cargo (<250t single lift)



Lead time heavy-lift (>250t single lift)

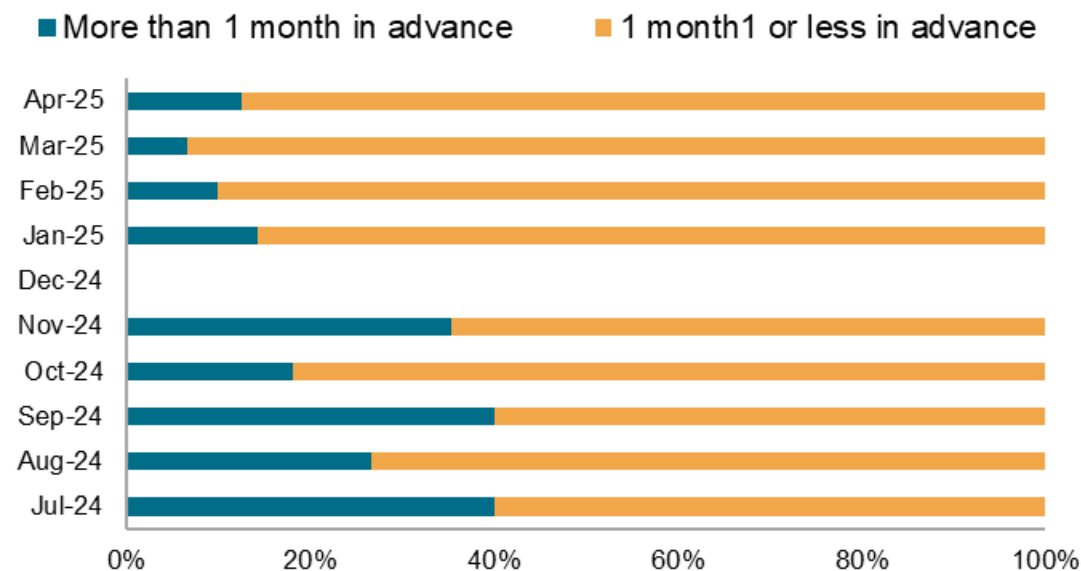


Source: S&P Global Market Intelligence

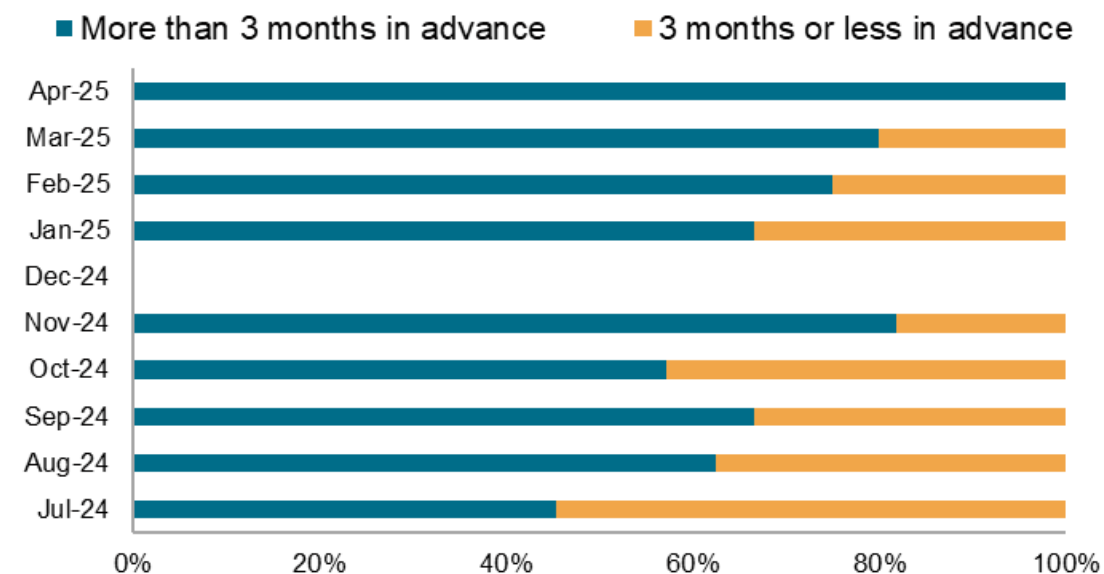
# Breakbulk & Project Cargo

## Shippers' Index: Lead time needed to book vessels

### Lead time container carriers



### Lead time deck carriers



Source: S&P Global Market Intelligence



# Breakbulk & Project Cargo

## Shippers' Index: Lead time needed to book vessels

### Lead time ro/ro vessels

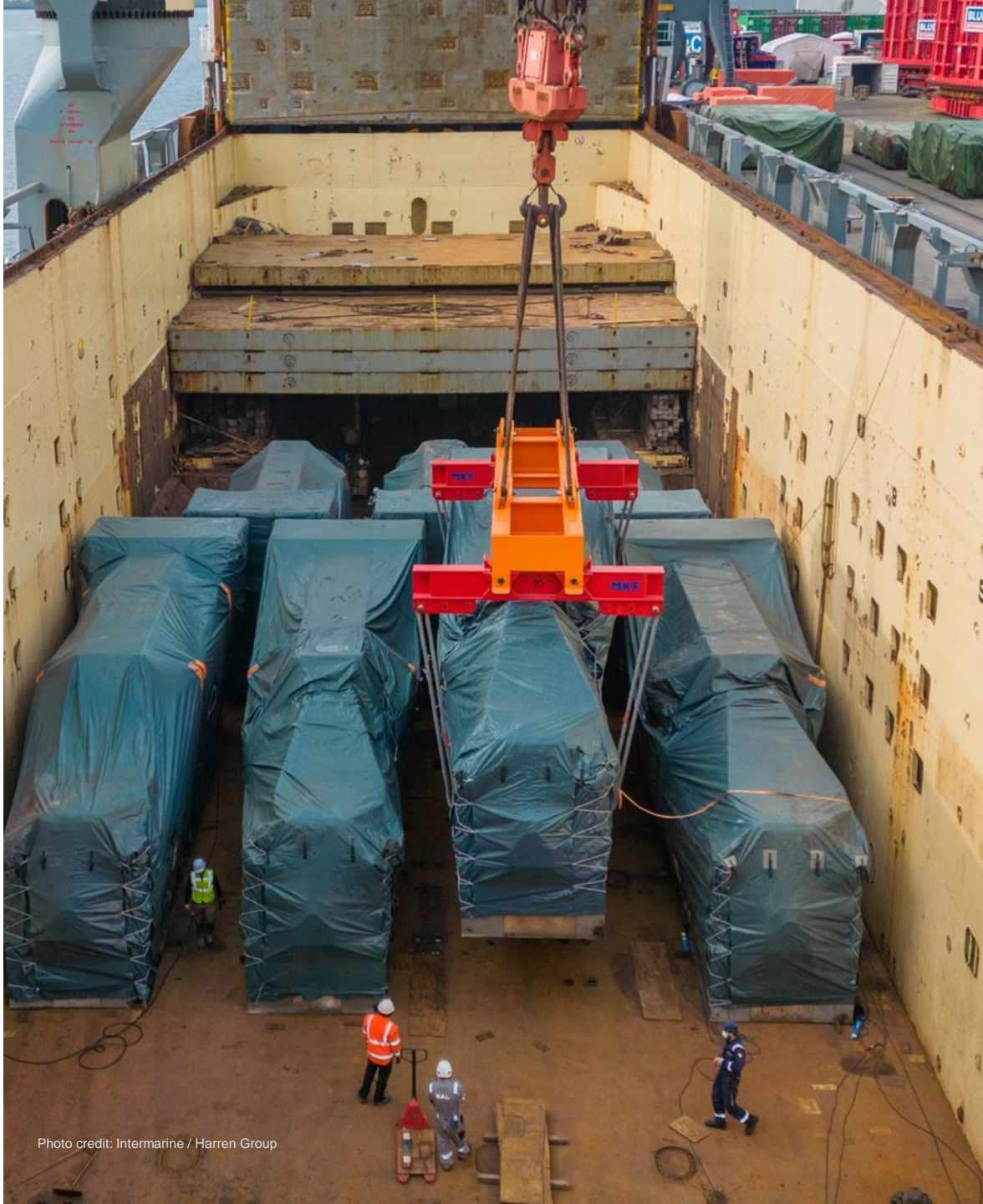
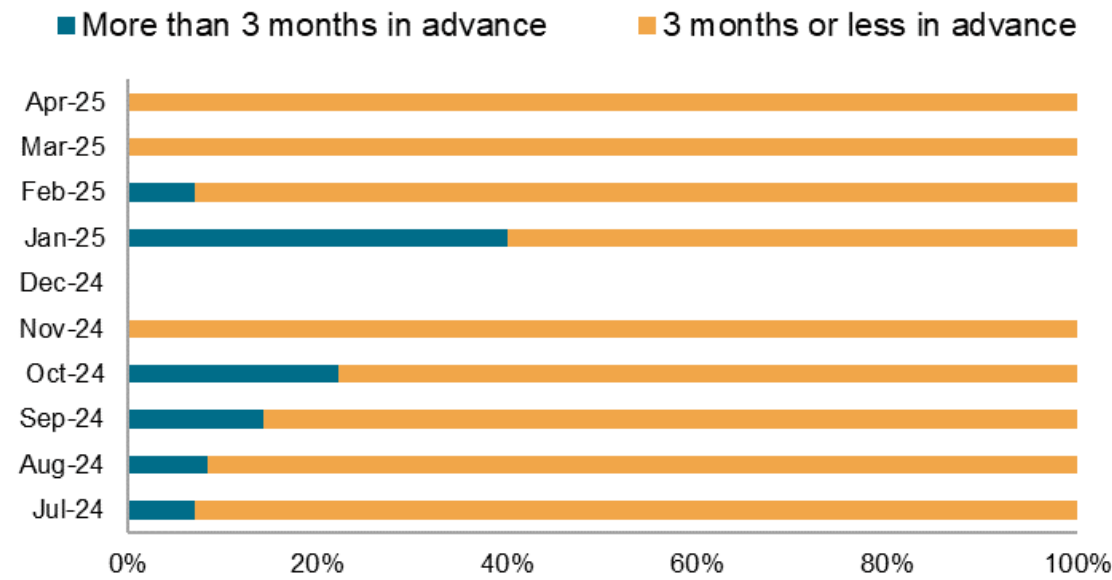


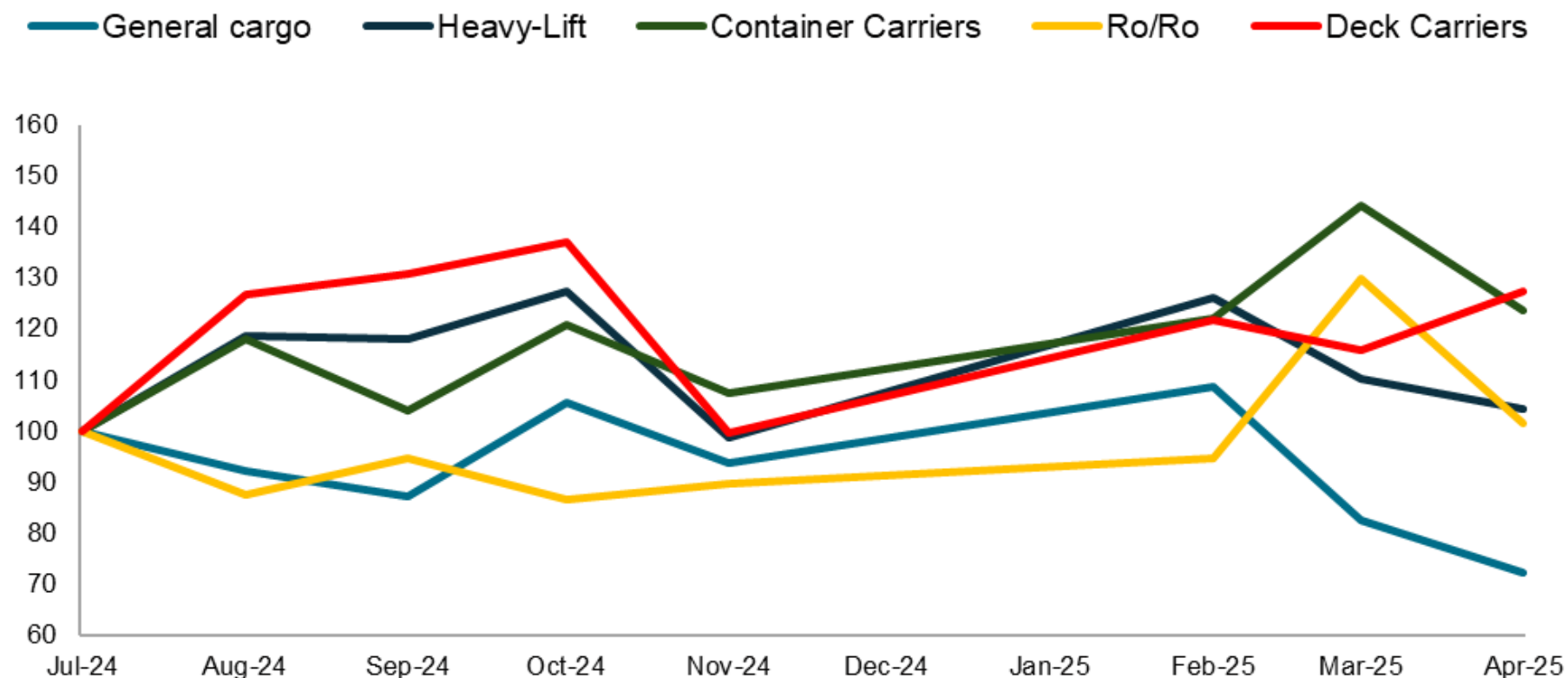
Photo credit: Intermarine / Harren Group

Source: S&P Global Market Intelligence

# Breakbulk & Project Cargo

## Breakbulk & Project Cargo Index

Index measures change in volumes lifted by vessel type; July 2024 = 100



Source: S&P Global Market Intelligence